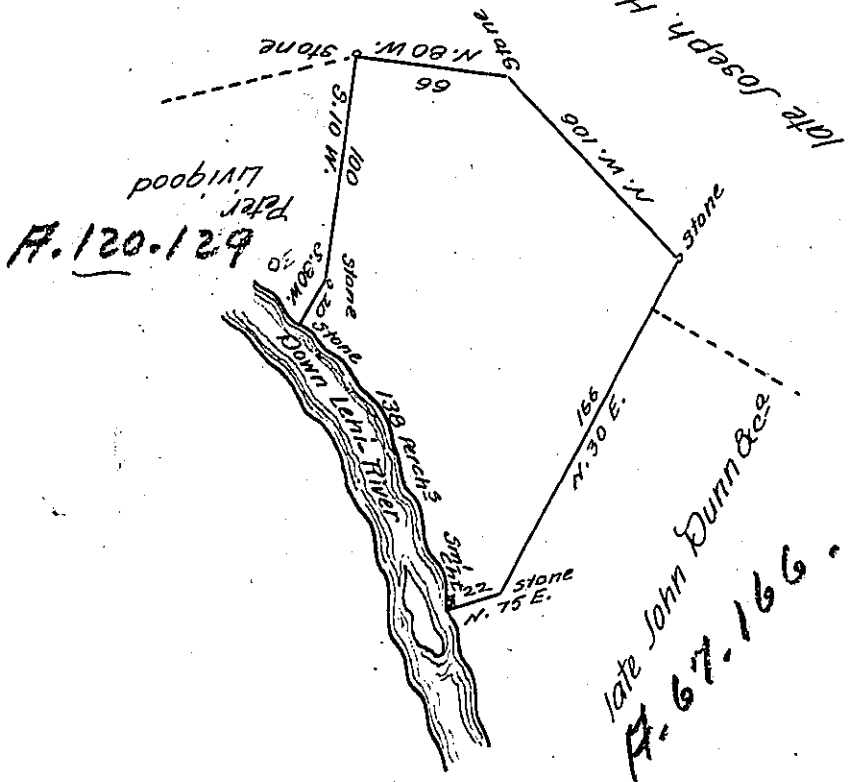


H-20-433

(E-) Mauch Chunk ⁶⁶
CARBON.

✓

© 95-11



Bearing & distance
down Lehi-River

1.	S. 42 E.	50
2.	S. 18 1/4 E.	88
		138

By virtue of a warrant dated the 15 June 1792 Surveyed the 28 June
1794 to Jacob Weiss the above described tract of Land situate on the East side of Lehi
River above an improvement known by the name of the Peach Orchards in Towarnen-
sing township Northampton County containing One hundred and thirty one Acres
three quarters & allowance of six P. Cent &c^a

P. Geo. Palmer, D.S.

To Jacob Spangler, Esquire,
Surveyor General.

IN TESTIMONY that the above is a copy of the original remaining on file in
the Department of Internal Affairs of Pennsylvania, made
conformably to an Act of Assembly approved the 16th day of
February, 1833, I have hereunto set my Hand and caused
the Seal of said Department to be affixed at Harrisburg,
this second day of July 1907.

Henry How
Secretary of Internal Affairs.